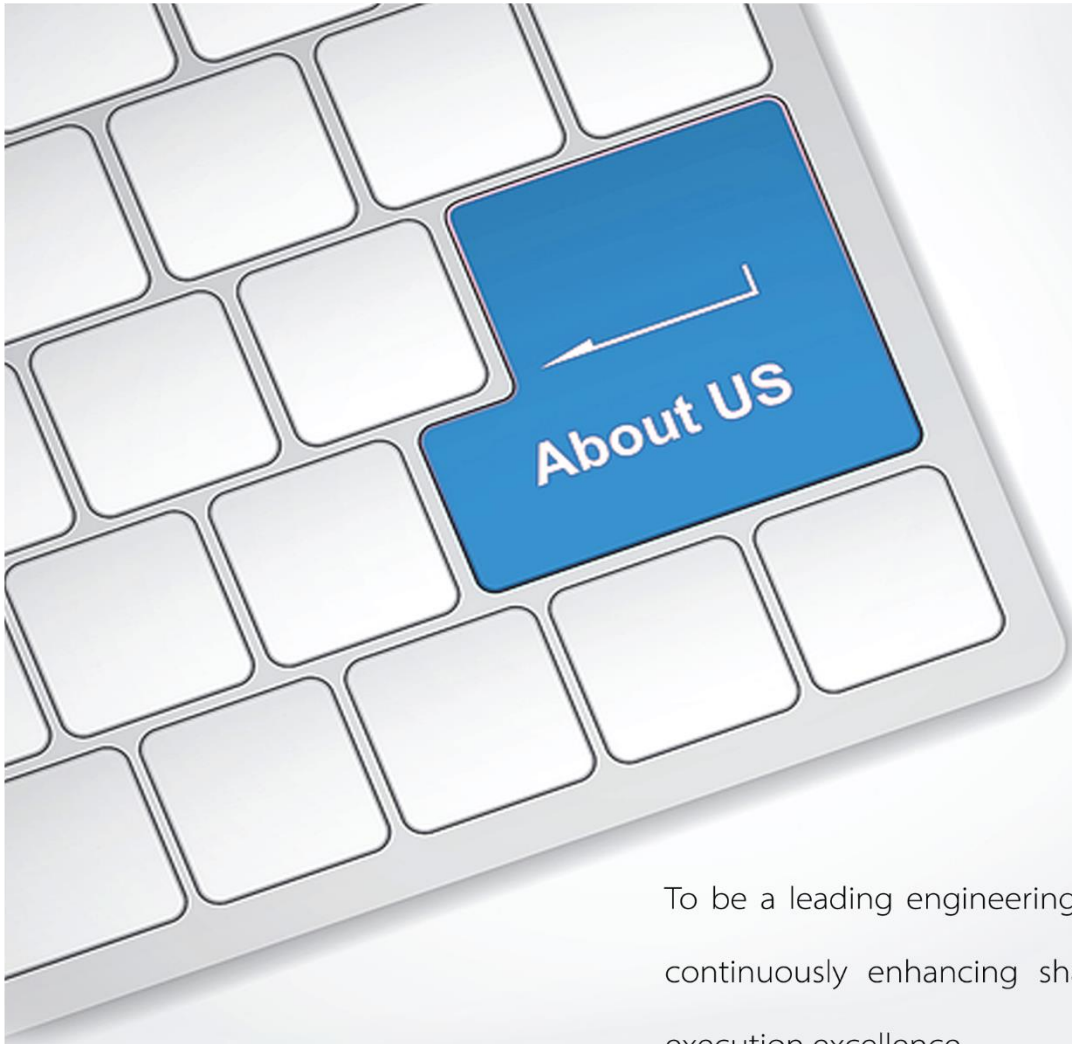


# ENGINEERING EXCELLENCE



**PROGRESS UNBOUND**



To be a leading engineering company committed to continuously enhancing shareholder value through execution excellence

---

## Vision

- Be the Employer of choice
- Attract, retain, and nurture talent
- Strive for improving operational efficiency through BPR
- Adopt leading practices for continuous improvement in people, processes, and technology

---

## Mission

- Achieve business growth through appropriate collaborations and tie-ups
- Build trust by delivering on customer promise through quality and timeliness
- Complete solution provider
- Enhancing customer delight
- Contribute in Nation's growth
- Save the environment



# BTL EPC LTD

Is the fastest growing and diversified EPC contracting company in the country, offering one-stop solutions – from concept to commissioning – in Bulk Material Handling Metal / Coal / Ash / Mineral Beneficiation Plants, Chemical & Fertilizer Plants, Shop Fabricated Equipment, Water, Power Transmission, Solar etc.

We provide turnkey solutions to core industries like Coal, Mining, Port, Steel, Cement, Ash, Fertilizer, Infrastructure, Power and Defence. With best in class products / services we are all set to enter aggressively into the global market.

Sectors We Serve	01
Diverse Engineering Divisions	02
Manufacturing Division	04
Bulk Material Handling Division	07
Coal Chemical Division	14
Ash Handling Division	18
Strategic Business Division	22
Underground Mining Division	24
Power Transmission Division	26
Water Treatment Division	28
Defence Sector	29
Consultants, Inspection Agencies & Certifications	30
Our Presence	31

# SECTOR WE SERVE

Manufacturing Division



Bulk Material Handling Systems



Coal Chemical Division



Ash Handling Division



Mineral Beneficiation



Strategic Business Division



Underground Mining Conveyor



Power Transmission



Water Treatment



Defence Sector





## Manufacturing Infrastructure

• Preparatory Workshop • Welding Facilities • Semi-Automatic Welding Method • CNC Profile Cutting M/C • Manufacturing Process • Major Machine Details • Handling Materials • Packing • Transportation



## Bulk Material Handling Division

• Coal Handling Plant • Raw Material Handling Plant • Ferro-Alloy Storage & Charging System • Troughed / Trunk / Gate / Surface / Steel cord / Pony belt / Bucket Elevator / High Angle / Pipe Conveyor System • Stock House Bins • SILO • Screening Plant • Limestone & Gypsum Handling System • Automatic Baggage Handling & Wagon Loading System • Overground Bunkers



## Bulk Material Handling Products

• Shuttle Conveyor • Bucket Elevator • Chute • Mechanical Vibrating and Reciprocating Feeder • Travelling Tripper • Wagon Loader • Telescopic Chute, Rack and Pinion / Flap Gate • Skip Hoist • Idlers • Pulleys • Bag Diverter • Plough Diverter • Paddle Feeders • Flapgates • Chutes • Internal Scrapper



## Coal & Chemical Division

• Coke Oven by-product / Ammonium Sulphate / Sulphuric Acid / Benzol Plant • Sinter Machine and BOF Gas Holder • Coal Charging Car of Coke Oven Battery • BOF e-dusting System • Exhauster • Roll Grind Shop • Final Gas Cooling Cum Naphthalene Scrubbing • PGC • Electric Arc and Ladle Refining Furnace • Auxiliary Furnace Parts • Vacuum Degassing • Billet / Bloom Caster • Gas Cooling and Condensation system • Decantation system • Decanter and associated accessories



## Coal & Chemical Products

• Shell and tube heat exchangers • Primary gas cooler • Pressure vessels • Process / Distillation columns • Continuous digesters • Blending vessels • Agitator / Condensate tank • Water-cooled jacket • Boiler components • BA hopper and filter separator • Blowing boxes • Platform structure for continuous casting plant • Recuperator • Chimney • Tar pre-separator • Claus catalytic crystallizer • Absorber and pre-absorber • Nuva feeder vessel



### Ash Handling Division

• Bottom Ash Handling System, • Fly ash Handling system • Ash Lean Slurry Disposal System • HCSD System • Silo Unloading System • Rail Loading System



### Mineral Beneficiation

• Iron Ore Beneficiation • Chrome Ore Beneficiation • Coal Washeries



### Strategic Business Division

• Hydraulic Press • Ore Beneficiation and Palletisation • Coal Washeries • Industrial Furnaces  
• Electrostatic Precipitators • ESR Furnace • ETP



### Power Transmission Division

Transmission Towers



### Water Management Division

• Water Intake, Transportation, Treatment, Distribution and Network Management • Desalination  
• Sewerage Collection Network, Treatment and Recycling • Industrial Effluent Treatment • Sludge Management • WTP • Water Purification Unit



### Defence Sector

• Mat Ground Surface • Mechanical Mine Layer • Cribs Bridging System • Craftsmen Shelter  
• Sophisticated Spares for Critical Equipment • Workshop Light • Bailey Bridge • CL3 Aluminium Bridge



### Agro Division

• Power tiller / weeder / reaper • Garden tools  
• Tractor implements • Bio toilets





# MANUFACTURING DIVISION

A Kolkata based manufacturing company having well-equipped modern Machine Shops, which include Heat Treatment, Precision Grinding, and Fabrication facilities of all descriptions including Sheet Metal work.

We have our presence in West Bengal in four factories out of which Three are in Dum Dum, Kolkata and One in Durgapur with the spread across of 400000 sqft area in total.

## Manufacturing Excellence & Wide Range of Capabilities

We have the most modern facilities equipped with the state-of-the-art infrastructure including CNC machines. We are producing many complex industrial products. Manufacturing excellence enables us timely delivery with strict compliance to quality and standard.



### WELDING FACILITIES:

Shielded Metal Arc Welding (SMAW) | Submerged-Arc Welding (SAW) |  
Gas Metal Arc Welding (GMAW) | Gas Tungsten Arc Welding (GTAW)

### SEMI AUTOMATIC WELDING METHOD:

Submerged-Arc Welding (SAW) |  
Gas Metal Arc Welding (GMAW)



CNC Profile Cutting M/C



PULLEY PRODUCTION LINE - 1200 to 1600 nos / YEAR





**SHOT BLASTING BOOTH**



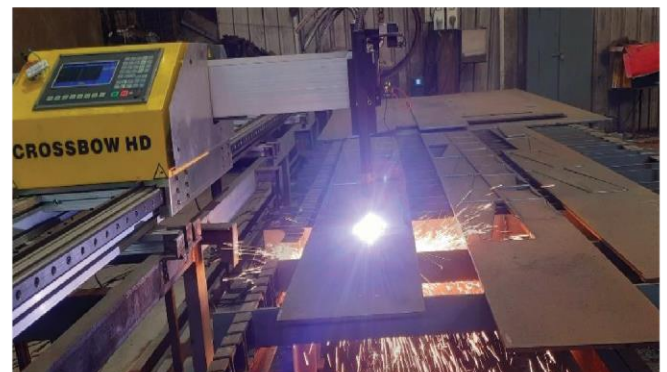
**ROLLING MACHINE**



**BEARING PUSHING MACHINE**



**GOLIATH CRANE (HANDLING MATERIALS)**



**CNC PLASMA CUTTING MACHINE**



**CNC PIPE CUTTING MC FOR ROLLER PRODUCTION**



ASH HANDLING PLANT EQUIPMENT

FLAP GATE

## PACKING & TRANSPORTATION



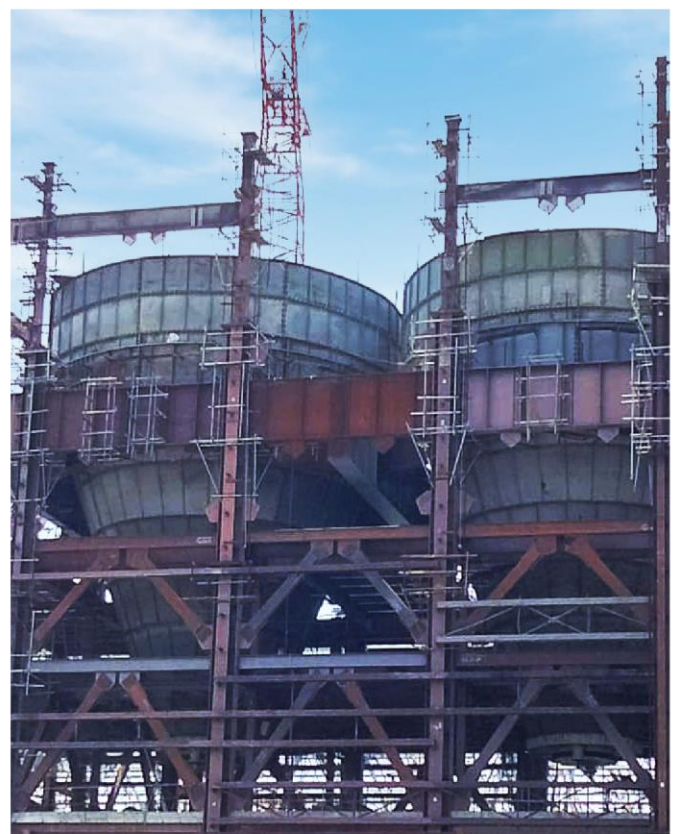
BLASTING & CNC m/cs



## **BULK MATERIAL HANDLING DIVISION**

Entered the Bulk Material Handling Equipment sector in the 1980s. Today, with more than 30 years of experience in this field, we now work for some of the most prestigious clients in the country. Our scope of work entails the design, manufacture, supply, erection and commissioning of Bulk Material Handling projects on a turnkey basis.

Our operational sectors see us offer equipment and components for industrial systems in sectors like Steel, Power, Oil and Gas, Cement, Mining, Coal and Minerals, Fertilizer, etc.



## ONGOING PROJECTS



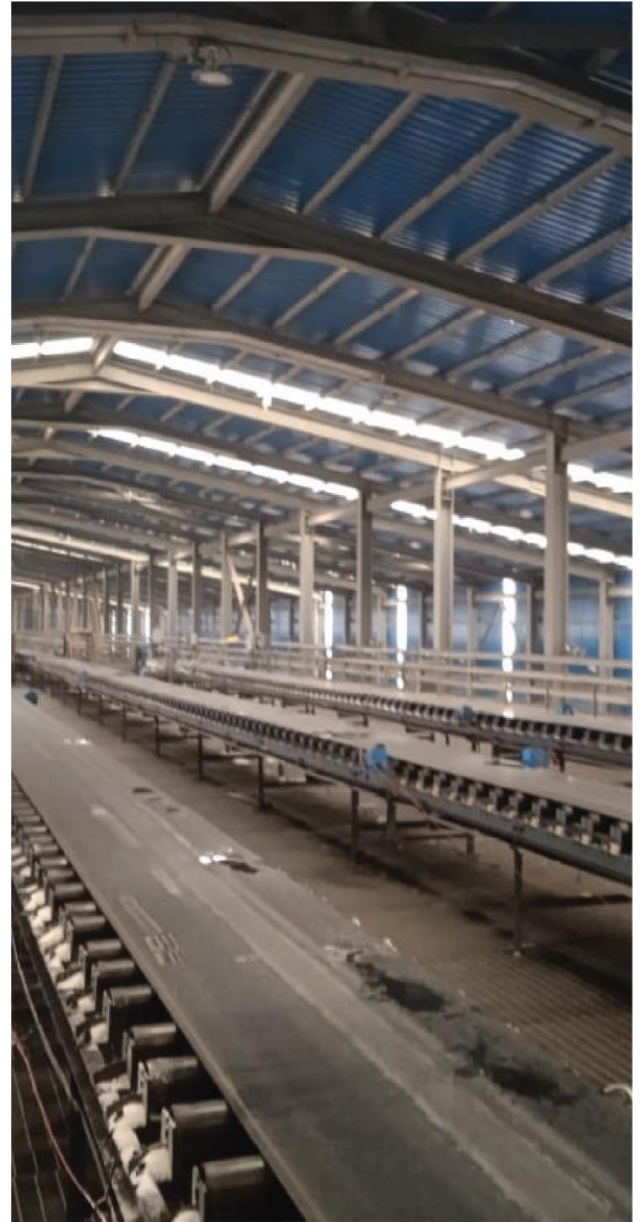
COAL HANDLING PLANT FOR BHEL BANGLADESH MAITREE (BIFPCL)



COAL HANDLING PLANT AT YADADRI - 5X800 MW



UDANGUDI SUPER CRITICAL THERMAL POWER



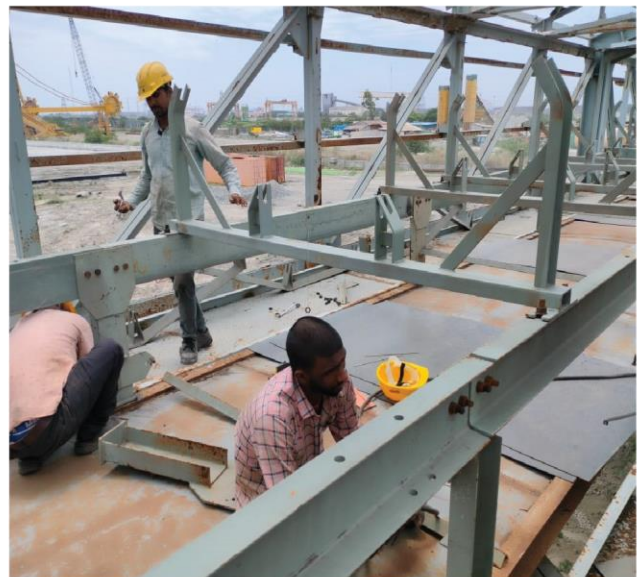
UREA HANDLING PLANT AT SINDRI & BARAUNI



WAGON TIPLER PACKAGE, NTPC BHEL



UREA HANDLING & BAGGING PACKAGE AT TFL, TALCHER



2X660 MW ENNORE SEZ SUPER CRITICAL THERMAL POWER PROJECT



COAL HANDLING PLANT  
AT PAKRI



COAL HANDLING PLANT  
AT NORTH KARANPURA



COAL HANDLING PLANT  
AT BHEL, BARAUNI



NMDC, NAGARNAR PROJECT: RMHS SINTER ROUTE & COAL ROUTE



COAL HANDLING PLANT AT NBPPL,  
UNCHAAR



COAL MINING PROJECT AT NTPC, BARWADIH

PAST PROJECTS



BELT CONVEYOR SYSTEM FOR TRANSPORTATION OF CALCINED DOLOMITE AT SAIL- DSP



COKE HANDLING SYSTEM WITH RLS & PIPE CONVEYOR AT MRPL



NEW CRUSHER BUILDING AND ASSOCIATED CONVEYORS PLANT AT SAIL BOLANI



EPC FOR BAGGING PLANT EXPANSION AT TCL, BABRALA



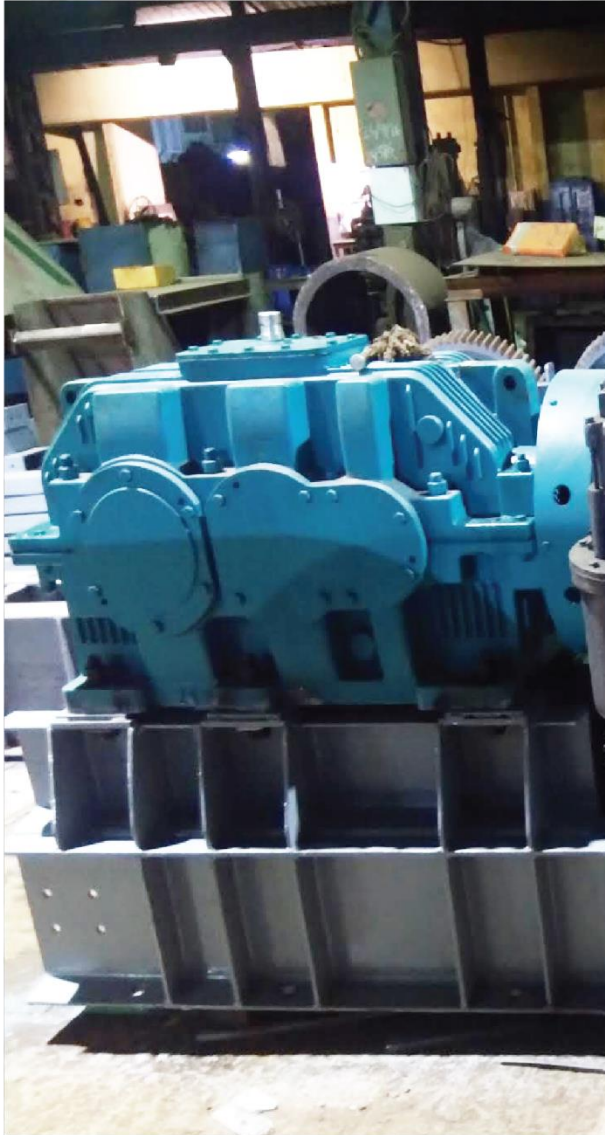
CHP AT BHEL WANAKBORI (1X800MW) EXTENSION TPS UNIT # 8 (GSECL)



PET COKE HANDLING SYSTEM IOCL AT PARADIP

# Bulk Material Handling Equipment

The following products feature prominently in our catalogue of offerings and are used to provide turnkey solutions to various companies in myriad sectors.



GEAR BOX



PADDLE FEEDER



TRAVELLING TRIPPER



PIPE CONVEYOR

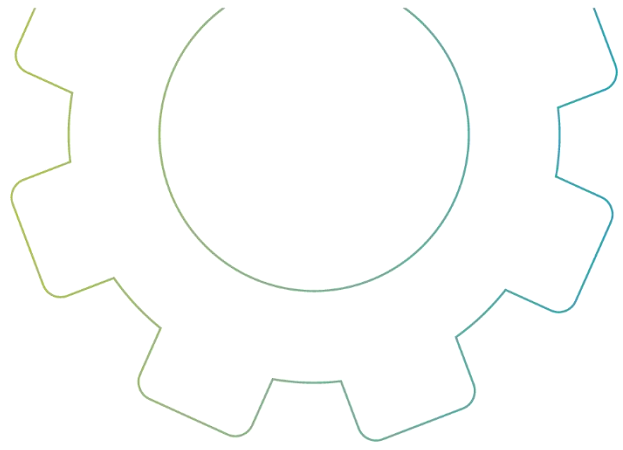


TELESCOPIC CHUTE



MECHANICAL VIBRATING & RECIPROCATING FEEDER





RACK & PINION GATE



SCREW CONVEYOR



CONVEYOR IDLERS



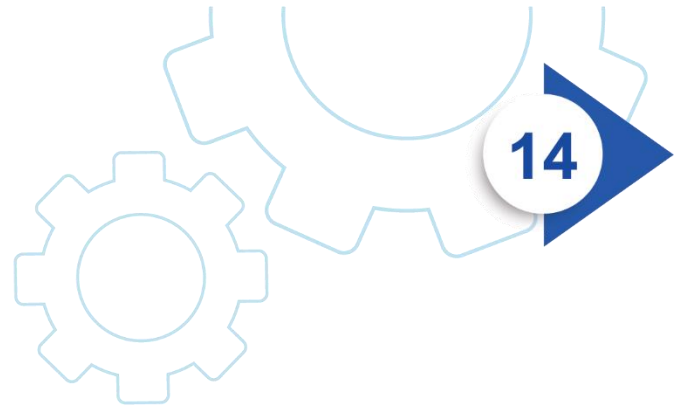
PULLEYS



BELT CONVEYOR



SHUTTLE CONVEYOR



## COAL CHEMICAL DIVISION

Coal Chemical Division manufactures critical components and provides turnkey solutions for coke oven by-product recovery, which are otherwise potentially harmful chemicals that could have an adverse environmental impact and also damage plant equipment. Our clients in India are increasingly focused on managing and meeting sustainability targets, generating value out of it and ensuring longevity of their plants. We provide solutions in handling coal tar, ammonium sulphate, benzol and other chemical plants.

The following products feature prominently in our catalogue of offerings and are used to provide turnkey solutions to various sectors and industries.

- Absorber
- Agitator Tank
- Condensate Tank
- FBD (Fluid Bed Dryer)
- Pressure Vessels
- Recuperator
- Saturator
- Decanter
- Primary Gas Cooler
- Electrostatic Tar Precipitator





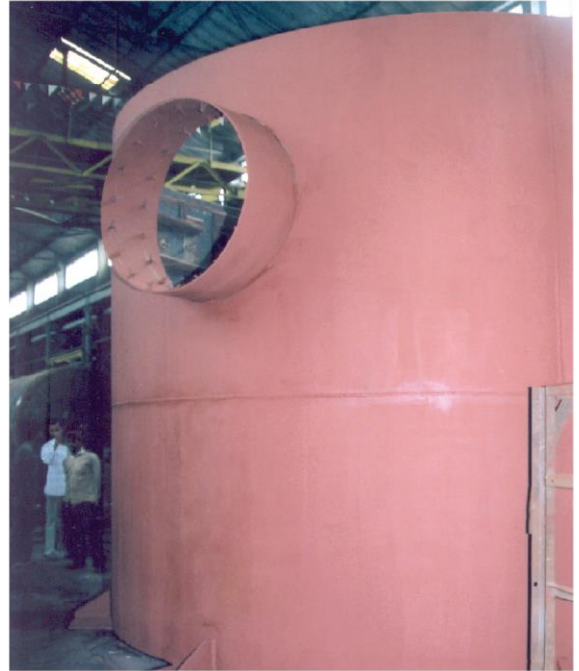
PRIMARY GAS COOLER



COLUMNS (SS-MS)



STACK



FURNACE & ITS EQUIPMENTS



FLY ASH SILO



DECANTER



STORAGE TANKS

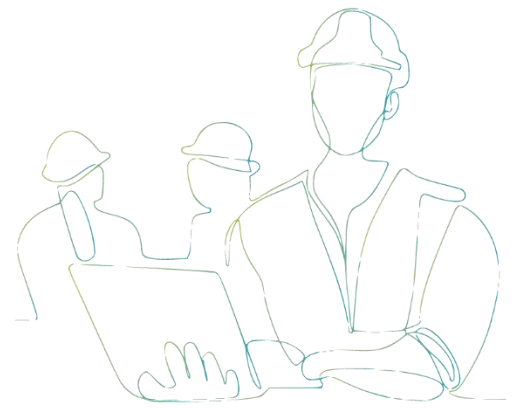
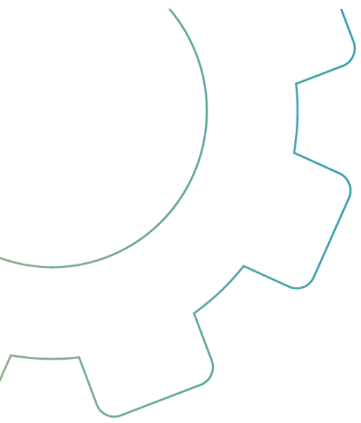


PROCESS COLUMN AT IOCL - 40M LONG

**ONGOING PROJECTS**

AMMONIUM SULPHATE PLANT, SAIL - BOKARO





**PRIMARY GAS COOLER & GAS PRE-COOLER,  
SAIL - ROURKELA STEEL PLANT**



**BENZOL ABSORPTION & DISTILLATION PLANT  
AT SAIL - DURGAPUR**



**AMMONIUM SULPHATE RECOVERY PLANT, RINL-VIZAG**



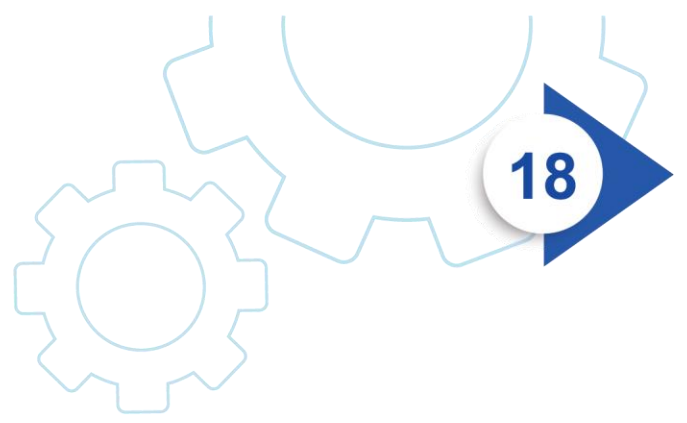
**SAIL, DSP PRIMARY GAS COOLER**



**DE-NITRATION PLANT PROJECT FOR  
HEAVY WATER BOARD**



**ELECTRIC EXHAUSTER FOR COKE OVEN BY-  
PRODUCT, SAIL - DURGAPUR**



## ASH HANDLING DIVISION

BTL EPC Ltd entered the Bulk Material Handling Equipment sector in the 1980s. With over 40 years of experience, we now proudly serve some of the most prestigious clients in the country. Our comprehensive services encompass the design, manufacture, supply, erection, and commissioning of Bulk Material Handling projects on a turnkey basis. We provide equipment and components for industrial systems across a variety of sectors, including Defence, Steel, Power, Oil & Gas, Cement, Mining, Coal, and Mineral Beneficiation.

In 2022, we further expanded our expertise by entering the Ash Handling sector, securing the largest Ash Handling project to date for the Yadadri Thermal Power Plant (5x800MW) of TSGENCO in India.



ASH HANDLING PLANT AT YADADRI - 5X800 MW



# POWERING

## Progress - The Ambition to Energize Tomorrow

- Flushing Nozzle
- Over Flow Louver
- Vent Louver
- BA Access Door
- Poke Door
- Ms Adaptor For Vent Filter Of FA Silo
- 400 NB Pipe Sleeve On Top Of Silo
- Man Hole On Top Of Silo
- Pipe Sleeve For Silo Fluidization Pad 100 Nb
- Adaptor For Pr. Relife Door On FA Silo Top
- Pipe Sleeve On Top Of Silo
- Adaptor For Fly Ash Silo Outlet Unit 4 & 5
- Adaptor For Fly Ash Silo Outlet Unit 1 & 2
- Adaptor For Level Transmitter On FA Silo Top
- Make Up Water Pipe Connection
- Refractory Cooling Arrg.
- Seal Plate Arrangement
- FAE Tower Structure
- BA Overflow Seal Box
- Coarse Ash Tank
- Mixing Box
- Air Receiver For Transport Air Compressors
- Buffer Hopper
- Ar Receivers With Accessories Silo Area
- Jet Pump
- Fly Ash Intake Valve
- Air Intake Valve
- Ejector Feed Sump
- Adopter Below Manual Knife Gate Valve (Eco)
- Flushing Aparatus
- Water Trough Type Expansion Joint (Eco)
- Dust Conditioner
- Telescopic Spout
- Refractory Anchors
- Inspection Door for BA Hopper
- Ms Adopters Below ESP Hoppers
- Fluidizing Pads For ESP Hopper
- 400 Ns Pipe Clamp With Foundation Bolts
- Ash Slurry Sump Liners
- Drive & Base Frame For Clinker Grinder
- Seal Through Overflow & Drain Conn.
- Cone For Inspection Window
- Door Nozzle
- Seal Through Flushing
- Ms Adaptor (Aph, Duct & Scr Hopper)
- Hanging Supports
- 400 NB Sleeve Couplings For Ash Slurry
- Disposal System
- 250 NB X 90 Deg Elbow
- 10" Spool Piece
- Wetting Head
- BA Overflow Tank
- Adapter For Wetting Head

# ASH HANDLING Equipments

The following products feature prominently in our catalogue of offerings and are used to provide turnkey solutions to various sectors and industries.



BAG FILTER

2023.08.28 14:12



COLLECTOR TANK



HYDROJECTOR (JET PUMP)



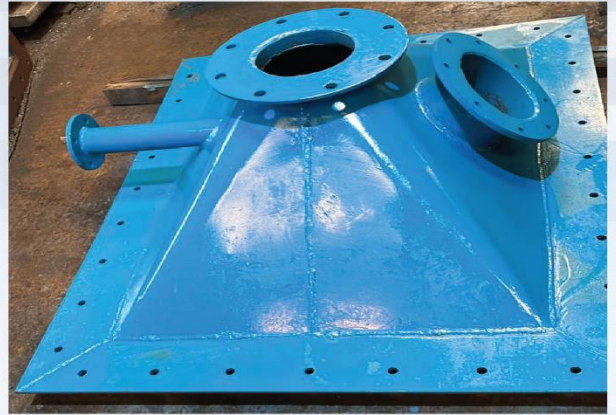
FEED GATE ENCLOSURE

2023.08.23 13:11





AIR RECEIVER (PLANT AREA)



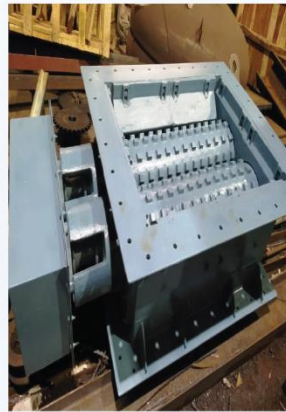
MS ADAPTER



SLEEVE COUPLING



FLY ASH FEED VALVE



CLINKER GRINDER



UNEQUAL TEE 10"X10"X8"



VACUUM BREAKER



UNEQUAL TEE 8"X8"X6"



# STRATEGIC BUSINESS DIVISION

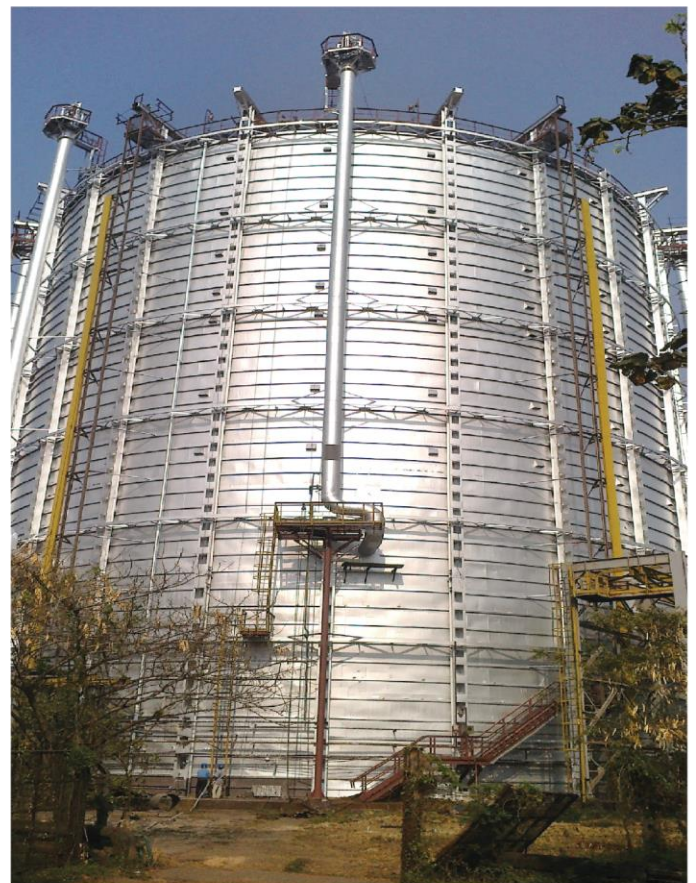
In 2014, leveraging our existing technological partnerships, manufacturing capabilities, and project management expertise, we established a new Strategic Business Division focused on providing turnkey solutions to support the primary functions of a plant.

Our solutions encompass a broad range of industries, including Coal Washing Plants, Ore Beneficiation Plants, Utilities and Balance of Steel Plants, Industrial Furnaces for Heating and Melting, Hydraulic Presses, and Electrostatic Precipitators.

## COMPLETED PROJECTS



FABRICATION & SUPPLY OF STEEL ARCH BRIDGE FOR NCC  
AGARTALA, KATAKHAL FLYOVER PROJECT



DISMANTLING & EPC OF BOF GAS HOLDER AT SAIL, DURGAPUR

# COMPLETED PROJECT



ELECTROSLAG REMELTING (ESR) FURNACE METAL & STEEL FACTORY FOR MINISTRY OF DEFENCE AT ICHHAPUR



ETP OF TATA NINL JAJPUR



HYDRAULIC CABBAGING AND DRAWING PRESS FOR OFAJ AMBAJHARI

# ONGOING PROJECT



DVC – BOKARO (PRE TREATMENT AND ETP PLANT)



# UNDERGROUND MINING CONVEYOR

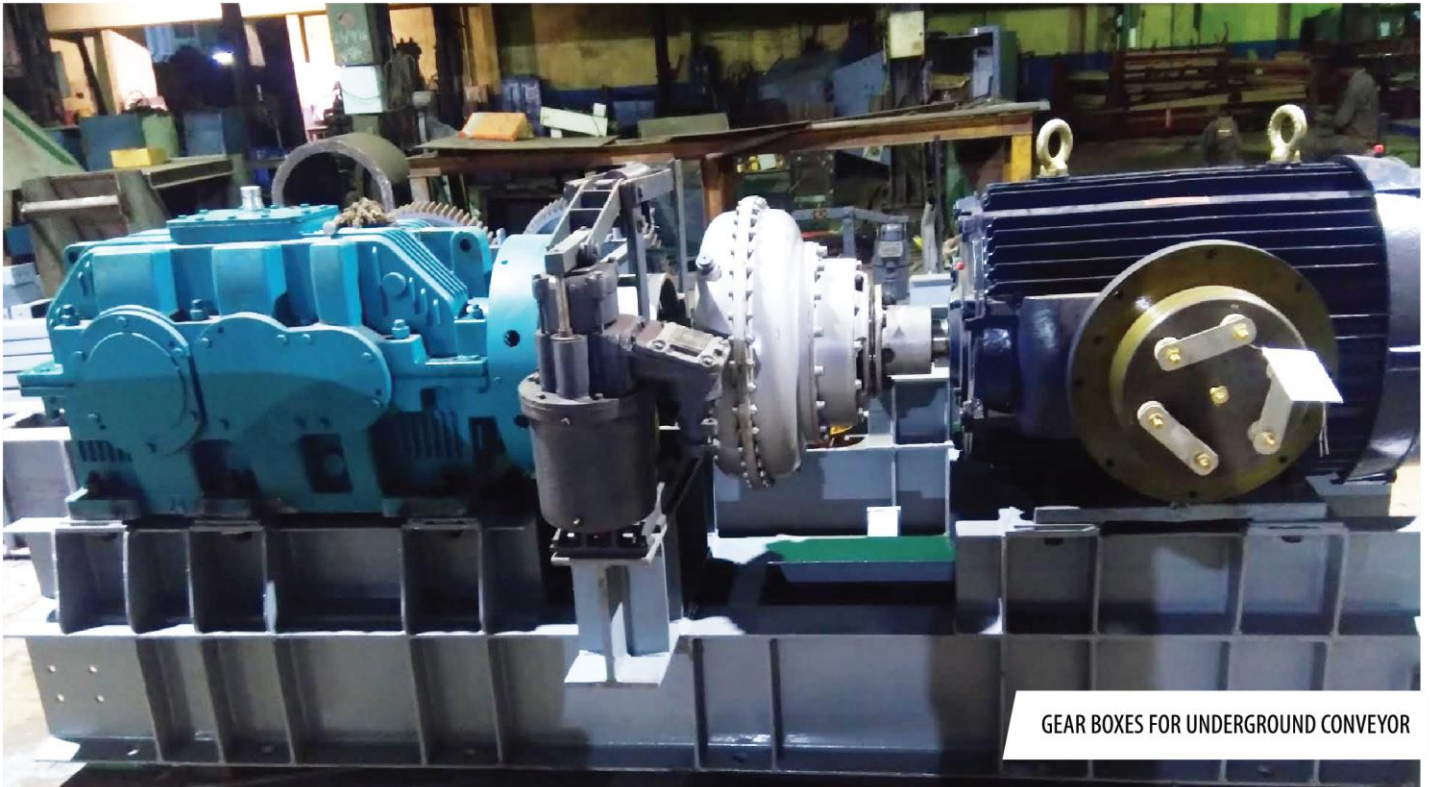
Is an established name in coal mines, providing unique solutions for mine conveyor applications. We cater dual drive conveyors / drive heads of various combinations e.g. 2 x 37 KW, 2 X 55 KW, 2 X 75 KW, 2 X 90 KW, 2 X 110 KW, 2 X 150 KW, 2 X 200 KW, 2 X 250 KW, 2 X 315 KW including the highest installed motor power in the country at 2 x 600 KW. These unique conveyors have significant presence in all Coal India mines at SECL, WCL, ECL, MCL and BCCL. We also cater to requirements of SCCL as well as those of many private mines.

Over the last 30 years we have supplied our own make of drive heads and conveyors to Coal India and all its subsidiaries, as well as private mines.

<b>COLLIERIES</b>	<b>TOTAL NO OF CONVEYORS</b>
South Eastern Coalfields (SECL)	235
Mahanadi Coalfields (MCL)	21
Western Coalfields (WCL)	55
Bharat Coking Coal Limited (BCCL)	15
Eastern Coal Fields (ECL)	35
Singareni Collieries (SCCL)	55
Central Coalfields (CCL)	1
Private Collieries	20

## CONVEYORS & DRIVE HEADS SUPPLIED SO FAR TO NON-CIL

Gayatri-Moonidih (GPL)	Conveyors & Drive Heads Supplied
INDU	2x600 KW Conveyors Supplied
Ultratech	Underground Conveyors & Drive Heads Supplied
JMS Mining	Underground Conveyors & Drive Heads Supplied



PULLEYS FOR UNDERGROUND CONVEYOR



GEAR BOXES FOR UNDERGROUND CONVEYOR



# POWER TRANSMISSION DIVISION

Extended its manufacturing and EPC expertise in 2015 to the area of power transmission towers in deference to the huge demand for the setting up of new lines for power evacuation.

The overall power transmission network is developed and operated under the aegis of the Power Grid Corporation of India (PGCIL), State Electricity Boards and a few private players (Tata, L&T, Sterlite among others) in accordance with the requirements of the new lines (132 KV to 1100 KV) and sub-stations.

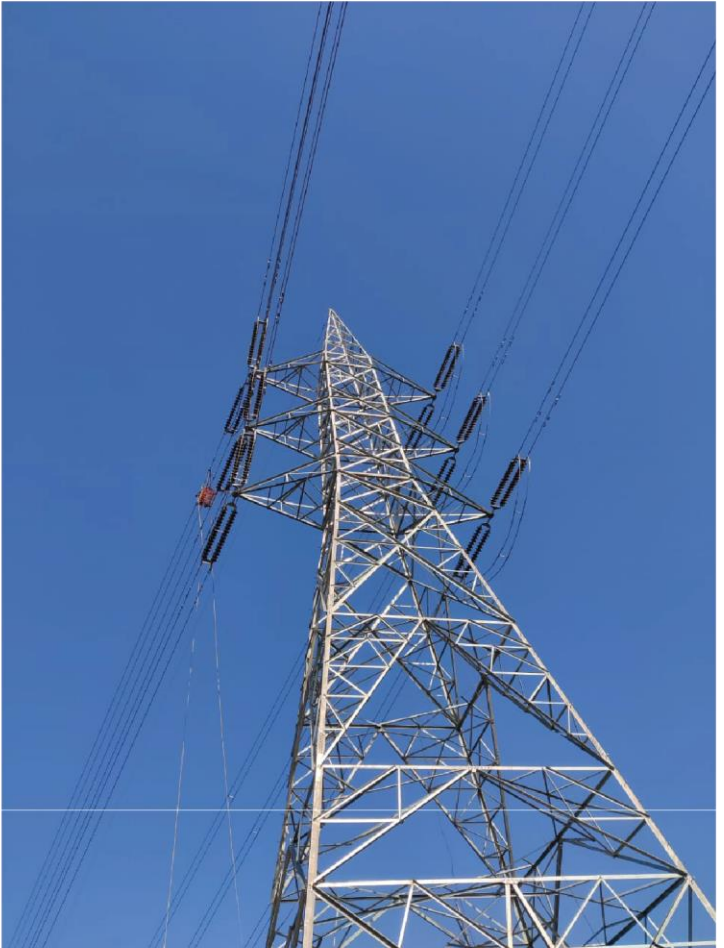


66 KV D/C TRANSMISSION LINE AT MANALI  
(LINE LENGTH - 9 KM) CLIENT- HPPTCL



132 KV D/C TRANSMISSION LINE FROM RANIKHET  
TO BAGESWAR - (LINE LENGTH - 43 KM) CLIENT - PTCUL, UTTARA-  
KHAND

220 KV D/C TRANSMISSION LINE ON TWIN ZEBRA  
CONDUCTOR FROM LAKHWAR TO DEHRADUN & LILO  
AT VYASI (LINE LENGTH - 40 KM) CLIENT - PTCUL,  
UTTARAKHAND



# WATER TREATMENT DIVISION

Stringent Environmental regulations towards sustainability & Government's commitment to supply water for drinking to every part of the country calls for designing the Water System with balanced OHR, Pump House and Distribution.

With robust in-house expertise in Design and Engineering, BTL EPC Limited Water Division has expanded their business in this core area of operation to perform exceptionally well worldwide as a WATER- EFFLUENT TREATMENT SYSTEM SOLUTION PROVIDER.

BTL supports the customer with the concept engineering, process design, supply, commissioning, system guarantee and training to the operators with full operation & maintenance support including the supply of required spares.

## TARGET AREA

- Steel industry
- Oil and gas fields
- Chemical and petrochemical plants
- Thermal or combined cycle power plants
- Food Industry
- Paper Mills
- Chemical and fertilizer industries
- Municipal areas



INTAKE PUMP HOUSE WITH VERTICAL PUMP



WATER TREATMENT PLANT





# DEFENCE SECTOR

Has been associated with the Ministry of Defence for a long time; to more than 35 years ago, to the days of the very inception of our company. We have, from the outset, been engaged with manufacturing and supplying sophisticated and critical field engineering equipment required by the army.

Among the highlights of our portfolio in this sector are Mat Grounding Surfaces (MGS CL-12, 30, 70), Belly Bridge Components, and Truck Mounted Water Purification Equipment.

## COMPLETED PROJECTS

The following projects give you a glimpse of the challenges we've addressed in the course of our work in providing turnkey solutions to the Defence sector.







MAT GROUNDING SURFACE CLASS 12, 70



BAILEY BRIDGE COMPONENTS

# DELIVERING SOLUTIONS TO INDIA'S LEADING COMPANIES

-  POWER SECTOR
-  STEEL & METALS
-  CONTRACTORS & INFRASTRUCTURE
-  OIL, GAS, CHEMICAL & REFINERY
-  MINING, DEFENCE, SHIPPING PAPER & PLYWOOD
-  TRANSMISSION







## CONSULTANTS



## INSPECTION AGENCIES

## RELATIONS WITH GLOBAL EPC COMPANIES

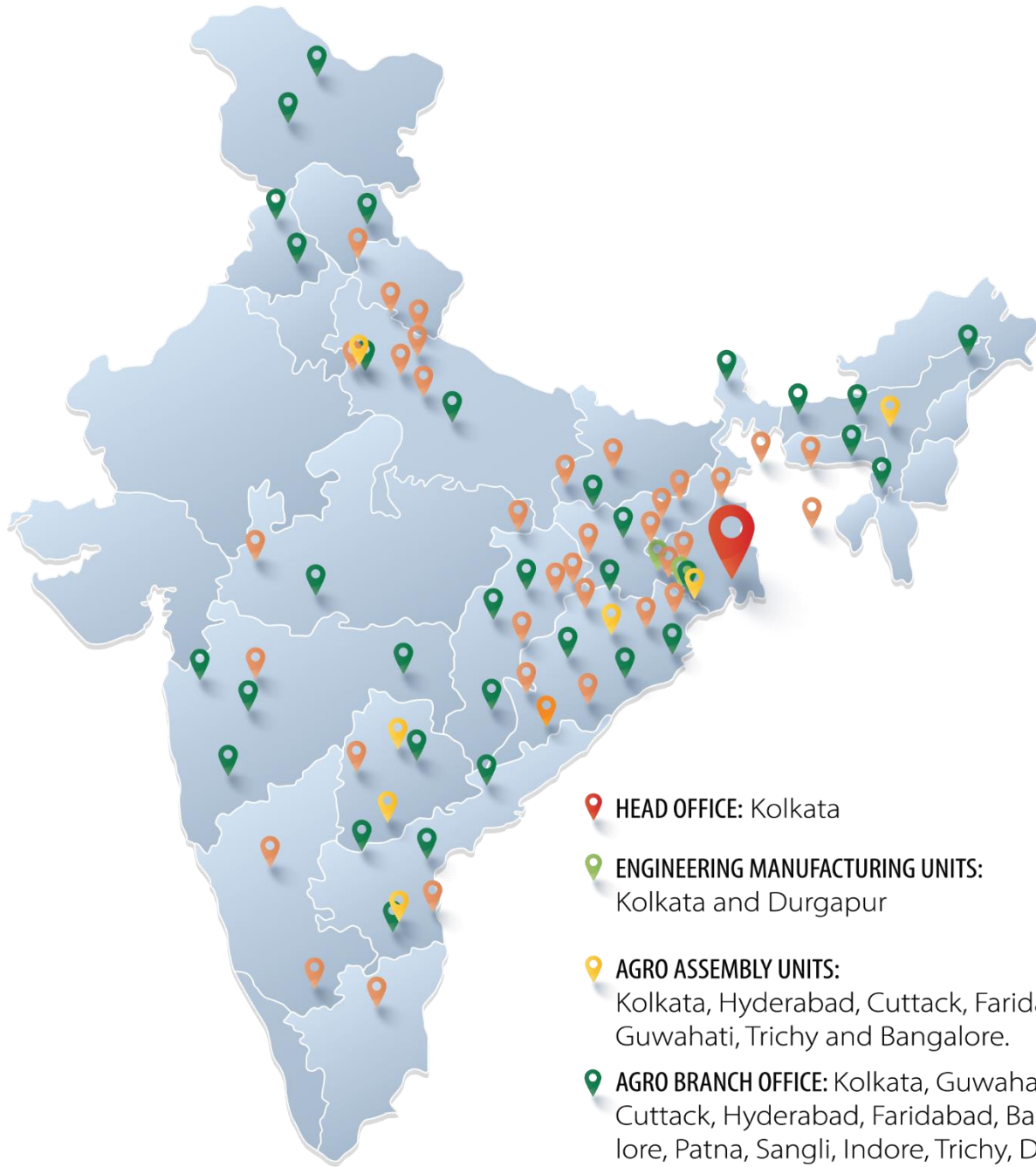
-  Buro Projektow Koksoprojekt
-  Far Eastern Power Engineering Plant, OJSC Dalenergomash
-  Vuhin
-  Dearborn Mid-West Conveyor Company
-  Consarc Engineering
-  CKIT
-  HBE F&M
-  POLTEGOR
-  FUJIAN LONGKING

	<b>Poland</b>	EXPERTISE: Design engineering & project management in coke making and related branches including environmental protection facilities
	<b>Russia</b>	EXPERTISE: Manufacturing chemical plant equipment like compressors, blowers and other accessories
	<b>Russia</b>	EXPERTISE: Eastern Scientific and Research Institute of Coal, Vuhin - They have over 70 years of experience in R&D and engineering of full production cycle of coke & chemical coking by-products.
	<b>USA</b>	EXPERTISE: Complex material handling systems for various industries
	<b>USA</b>	EXPERTISE: Design and fabrication of various advanced vacuum and controlled atmosphere furnaces for processing of metals, specialty alloys, and engineered materials
	<b>South Africa</b>	EXPERTISE: Design support of pipe conveyors and high angle downhill conveyor systems
	<b>South Korea</b>	EXPERTISE: Design, Engineering, Manufacturing, Testing, Commissioning of Hydraulic Press, Shell Forging Press, Ring Rolling Machine
	<b>Poland</b>	EXPERTISE: Surface Mining & Stockyard Handling Equipments
	<b>China</b>	EXPERTISE: Ash Handling System and largest manufacturer of air pollution protection

## CERTIFICATIONS


# Multi **GE** **GRAPHIC** Presence


---




 **HEAD OFFICE:** Kolkata

 **ENGINEERING MANUFACTURING UNITS:**  
Kolkata and Durgapur

 **AGRO ASSEMBLY UNITS:**  
Kolkata, Hyderabad, Cuttack, Faridabad,  
Guwahati, Trichy and Bangalore.

 **AGRO BRANCH OFFICE:** Kolkata, Guwahati,  
Cuttack, Hyderabad, Faridabad, Banga-  
lore, Patna, Sangli, Indore, Trichy, Durg,  
Lucknow,  
Chaibasa.

 **ONGOING ENGINEERING PROJECTS:**  
Bangladesh, Udangudi, Talcher, Ennore,  
North Karanpura, Barauni, Sindri,  
Unchahar, Yadadri, Pakri, Nagarnar,  
Bokaro, Durgapur, Rourkela, Vizag



 **SHRACHI**® group company

**BTL EPC LIMITED**

CIN No. - U29100WB1992PLC054541


Regd. Office - 2 Jessore Road, Dum Dum, Kolkata - 700 028

**CORPORATE OFFICE**

Shrachi Tower, 686 Anandapur, EM Bypass, Kolkata - 700 107

 [enquiry@shrachi.com](mailto:enquiry@shrachi.com)

 [btlepcltd.com](http://btlepcltd.com)

 98313 08714  
90070 80314

**VENDOR CELL**

Solanki Tower, Salap Howrah  
(Besides Bhandari Automobiles)  
West Bengal - 711409

**SOCIAL MEDIA**

  BTL EPC Ltd - Engineering

**FOR MORE  
DETAILS**

